

## Staff Extension List – March 2008

(alphabetically by first name)

| Name            | Extension | Name                     | Extension | Name             | Extension |
|-----------------|-----------|--------------------------|-----------|------------------|-----------|
| Barbara Schoen  | 105       | Joan Christopher         | 136       | Melanie Hamann   | 169       |
| Bonnie Elbaz    | 150       | Joanne Nelson            | 131       | Michele Smith    | 141       |
| Carmen Garcia   | 100       | Joe Zdeb                 | 163       | Noemi Carlo      | 129       |
| Carol Trub      | 159       | Karen O'Neill            | 177       | Pat Crane        | 111       |
| Debbie Klaus    | 104       | Kathy Razetti (on leave) | 155       | Sara Laird       | 160       |
| Dianne Burdette | 132       | Kim Pascucci             | 146       | Sara Lemig       | 114       |
| Donna Reid      | 138       | Leah Donato              | 157       | Stacy Solly      | 112       |
| Erica McKay     | 143       | Lena Zullo               | 128       | Stephanie Claus  | 110       |
| Fran Stiles     | 139       | Lisa Michaelson          | 106       | Susan O'Leary    | 142       |
| Gwen Forte      | 108       | Margaret Sesny           | 107       | Wanda Cintrón    | 133       |
| Heidi Sloan     | 103       | Maureen Lawrence         | 101       | Yolanda Franklin | 102       |

### Don't Miss This One!

On Saturday, April 05, 2008 at Toms River High School North Auditorium, 1245 Old Freehold Road, Toms River the Ocean County Early Learning Council, The Children's Home Society of New Jersey and The Ocean County Board of Chosen Freeholders is sponsoring "A Day With Dr. Bruce D. Perry, M.D., Ph.D."

Dr. Bruce Perry is a nationally renowned presenter and Senior Fellow of ChildTrauma Academy. His two presentation titles are: How Early Childhood Shapes Child and Culture and A Vaccine Against Violence, Six Core Strengths For Children. There will be time for questions and answers. The fee is \$25.00 for the day which includes 4.5 training hour/.45CEUs and Social Work CEUs, lunch, vendors and resource tables. Limited scholarships are available.

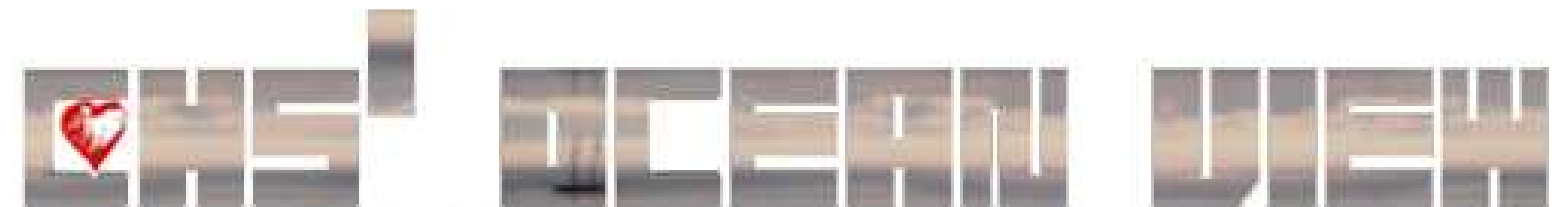
His evidence-based research is life changing. Anyone who cares about young children, the future, and the changing human brain needs to hear Dr. Perry.

For a registration brochure go to The Children's Home Society of New Jersey's web site, [www.chsofnj.org](http://www.chsofnj.org), click on Ocean County Services and scroll down to Special Events. Or call Joan at 732-557-9633, ext. 136.



The Children's Home Society

OF NJ AND EASTERN PA®  
1433 Hooper Avenue, Suite 340  
Toms River, New Jersey 08753  
[www.chsofnj.org](http://www.chsofnj.org)



THE CHILDREN'S HOME SOCIETY OF NEW JERSEY - OCEAN OFFICE

NEWSLETTER

SPRING 2008

## Program Updates

### Strengthening Families Through Early Care and Education Initiative(SFI)

The Children's Home Society of New Jersey is pleased to announce our participation in the Strengthening Families Through Early Care and Education Initiative (SFI). SFI provides an opportunity to enhance the educational, physical, social and emotional development of children within early care and education settings. SFI is a strategy to prevent child abuse and neglect. It is designed to build on and strengthen the existing relationship between preschool programs and families in selected communities.

SFI is a state-wide initiative. Each county in New Jersey has chosen five child care centers to participate. Susan O'Leary is the SFI coordinator working with the following Ocean County centers: Beachwood Nursery School, Give and Take Child Care, Toms River Nursery School and Kindergarten, Treasured Angels, and Tuckerton O.C.E.A.N. Inc. Kids/Head Start. We applaud these centers for their commitment to children and families in Ocean County.

**Helping Caring Families** - Helping Caring Families is an exciting new program designed to provide a variety of services for Ocean County families, caregivers and child care providers with children who are medically fragile and/or who have special needs. The goal is to share new skills with those responsible for the care of these children to help reduce their every day pressures. Those attending participate in support groups and a series of interactive workshops designed by EPIC (Every Person Influences Children). The program offers respite care, crisis intervention, consultation and guidance services to the participants. For more information, contact Wanda Cintrón at 732-557-9633, extension 133.

**Post Adoption Child Care(PACC)** - PACC is available for DYFS children in foster care who have been adopted. Child care is only open to children from birth to 6 years of age. Parents must meet eligibility requirements and demonstrate a need for child care services. There is no co-payment. Previously, these families lost all eligibility under PACC funding when their child started kindergarten. The Department of Children and Families has recently revised the regulations to include children who attend a half-day kindergarten program. These children are now eligible for any wrap around child care that may be needed by the family.



BROWNIE TROOP #200, SAINT JOSEPH'S, TOMS RIVER WITH SOME OF THE PAJAMAS THEY COLLECTED

## Kids for Kids

We want to extend a special thank you to the groups of young people who have demonstrated their generosity by giving to others. These groups, Brownie Troop #200 (pictured on the left), Brownie Troop #204 and The Carpenter's Apprentice Club, all from Saint Joseph's, Toms River and Girl Scout Troop #363, Manchester (pictured on the right) have contributed and organized drives to ensure other children would have great holiday and birthday celebrations. Thank you!



GIRL SCOUT TROOP #363, MANCHESTER  
LEFT TO RIGHT: MEAGHAN QUINN, CAITLYN SLOAN, RACHEL DRAGAN, TORI BOLDERMAN, KELSEY LUNN, AMANDA PASTORE

## Staff Notes

### Work First New Jersey –

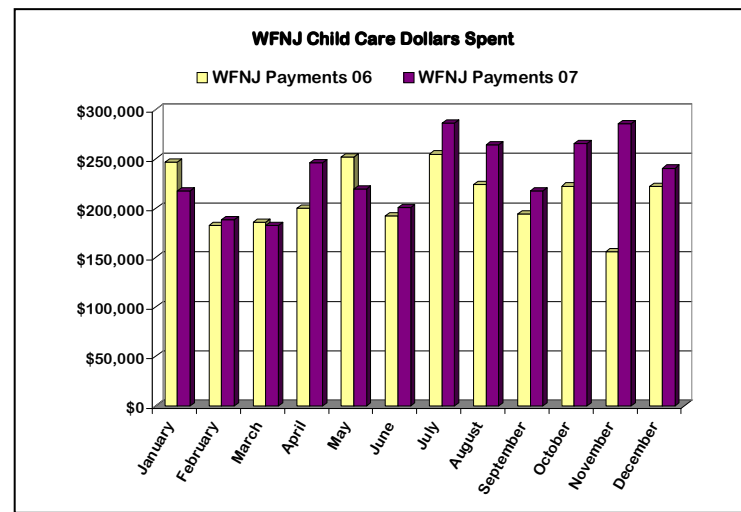
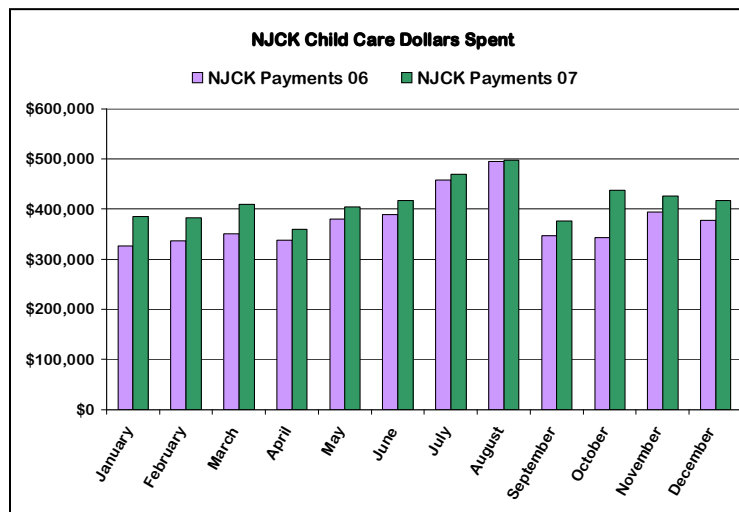
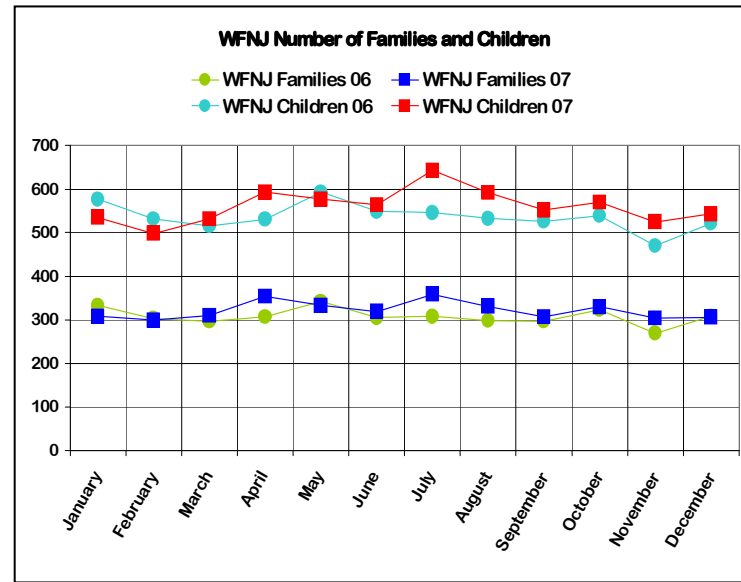
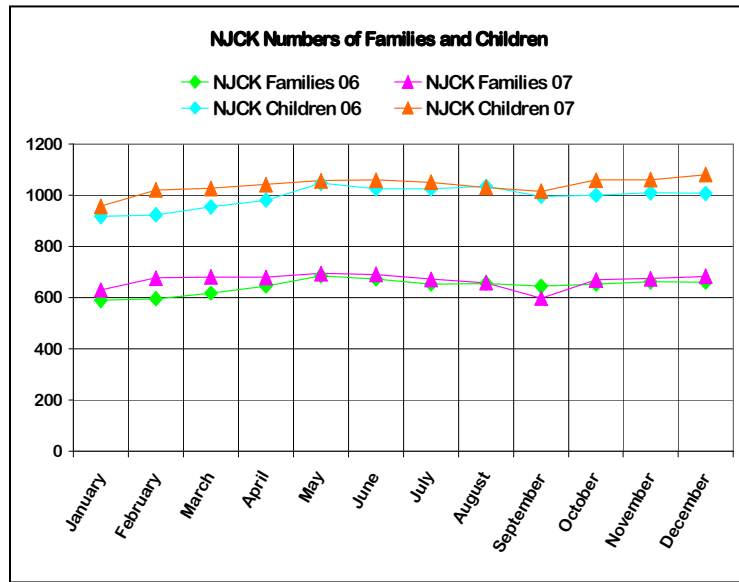
A sad goodbye was given to **Laura Porter** who resigned her position as Program Assistant I after 2 ½ years with CHS of NJ. Laura has relocated to South Brunswick. She found employment with Child Care Connection, Mercer County's CCR&R. We are happy to welcome **Karen O'Neill** as the new Program Assistant. Karen began at CHS of NJ on 2/11/08 and is assimilating herself into her new job and our newly expanded office. Welcome. Karen!

**New Jersey Cares for Kids - Melanie Hamann** started with us on a temp-to-perm basis as a New Jersey Cares for Kids Program Assistant I in February. As soon as her training is complete, she will assume the caseload of Kathy Razzetti, who remains on a medical leave of absence.

**Reunification Program** - We are very pleased to announce that **Sara Laird** began working with the Ocean Reunification Program on January 28, 2008. Sara's primary responsibilities within the program are to coordinate transportation services, coordinate Family Team Meetings, and to locate appropriate community resources and services for our clients.

**Early Care & Education – Joanne Nelson**, our Family Child Care and Special Needs Network Coordinator, is moving to Florida at the end of March. Joanne has been with the agency for eight years and with the Special Needs Network since its inception in 2000. The network has grown with Joanne's help and has been recognized statewide in "Families" magazine published by the Division of Developmental Disabilities and nationally in a research report called "In Your Own Backyard", published by The Women's Policy Research Group. Joanne and the Special Needs Network providers have really made a difference in the lives of children with special needs and their families in Ocean County. We will miss her and wish her well in her new endeavors.

In 2007, the number of families and children The Children's Home Society of NJ touched through the child care subsidy programs continued to grow.



## Construction Zone!



Our office is under construction in order to accommodate our new Reunification program. There is a new entrance about 25 feet down the hall from where the old one was located. The new office will also provide a new waiting room and interview room. Our receptionist, Carmen, has been relocated to the new space. The original office space is being reconfigured to add an office for Joan Christopher. We appreciate your patience while we go through this transition.

## CONGRATULATIONS

to **Yolanda Franklin** (left), WFNJ's Administrative Assistant, in her recent achievement of an Associates Degree from Ocean County College with a 3.3 grade average. Yolanda will be continuing her education at Georgian Court University, majoring in social work.

to **Dianne Burdette** (center), our Child Care Health Consultant Coordinator. Dianne will be receiving her Master's Degree in Nursing, with certification in Advanced Practice Nursing in Pediatrics from Rutgers State University in Newark.

to **Fran Stiles** (right), WFNJ-DYFS Program Assistant, for completing a 2½ year Sign Language Interpretation program at Ocean County College. Fran will receive a Certificate of Proficiency and plans to volunteer with theatrical interpretation assisting deaf individuals or groups.



# 2007 Holiday Gift Drive

Joyful memories for over 300 Ocean County Children

Thank you to all the contributors who participated for the first time this year...

- Ed Allen, Toms River
- Beachwood Nursery School, Beachwood
- Tara Braun, Toms River
- Brownie Troop #200, Saint Joseph's, Toms River
- Brownie Troop #204, Saint Joseph's, Toms River
- Cablevision of New Jersey South, Tinton Falls
- The Carpenter's Apprentice Club, Saint Joseph's, Toms River
- Curves, Ellen Magnuson, Toms River
- Environmental Industrial Services Corp. of NJ, Anthony DeRosa, Port Reading
- Peggy Ewart, Toms River
- Lisa Ferraro, Toms River
- Brandon Fischbach, Toms River
- Marie Filippone, Toms River
- Geri Gullace, Toms River
- The Haven at Manchester, Toms River
- The Honey Tree, Toms River
- Margaret A. Jones, Marlboro
- Jason & Elise Longo, Toms River
- Mulligan's Bar & Grill, Toms River
- NBM Whitehurst & Clark Book Fulfillment, Inc.
- Cory Panaccione, Manasquan
- Matt Reilly, Forked River
- Helen Rush, Toms River
- Brianna Santarsiero, Toms River
- Dr. Petronilo Sears and Staff, Brick
- Seventh-Day Adventist Church of Toms River
- Lisa Spiwak, Toms River
- Maryann Todd, Toms River
- John Wilson, Toms River
- Woodhaven Lumber, Lakewood



...and to those who have become part of our holiday tradition!

- Boscov's, Ocean County Mall
- Century 21 Action Plus Realty, Freehold
- Century 21 Action Plus Realty, Howell
- Century 21 Action Plus Realty, Jackson
- Century 21 Action Plus Realty, Morganville
- Dorothy Lucas and Family, Brick
- Employee Center for Young Children, Rahway
- Episcopal Church Women, Holy Innocents Church, Beach Haven
- Hilltop Nursery School, Toms River
- Knit Wits, Saint Andrews United Methodist Church, Toms River
- Matzel & Mumford, Hazlet
- Melodiers, Clubhouse 2, Holiday City, Berkeley
- Mom's Club of Jackson West
- Mountain Hill School, Atlantic Highlands
- Ocean County Library, Toms River
- Pajama Program, NJ Chapter, Lincroft
- Point Pleasant Library Volunteers
- Shorrock Gardens, Brick
- Stepping Stone Preschool, Brick
- Tech Depot Employees, Toms River
- Toms River United Church of Christ
- United Way of Ocean County, Toms River



### Child Care Center FYI Grant Reimbursement Information-Licensed Child Care Centers

This grant is available to those child care facilities that submit a complete Preliminary Assessment in order to obtain a no further action letter. The New Jersey Department of Environmental Protection and the New Jersey Economic Development Authority have announced the availability of the Hazardous Discharge Site Remediation Fund application. Visit [www.nj.gov/dep/srp/fiance/hdsrf/hdsrf\\_ccfg.htm](http://www.nj.gov/dep/srp/fiance/hdsrf/hdsrf_ccfg.htm). From this site you can navigate information on the application and frequent questions or call the Office of Community Relations at 609-984-2038.